

The automatic manifolds of the AMM series are the perfect solution for the distribution of plastic materials inside factories. There are four models with pipes 40 - 50 - 60 - 70 mm in diameter.



TECHNICAL SPECIFICATIONS:

- Siemens PLC control unit and touch screen interface. The control unit manages up to 4 modules.
- Gearmotor with a built-in self-breaking system.
- Internal body made of wear-resistant stainless steel.

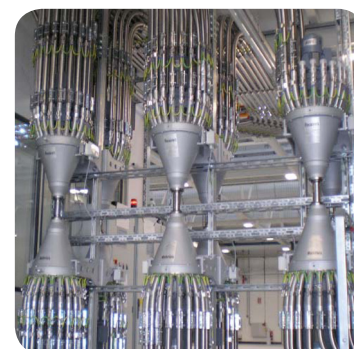
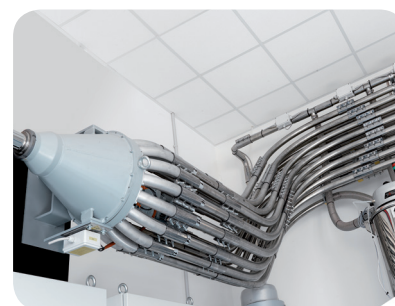
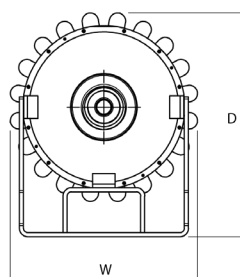
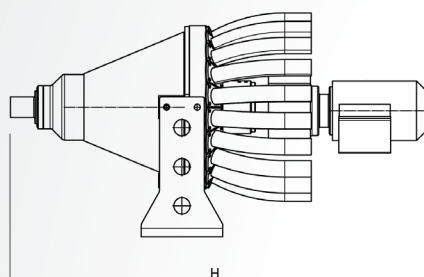


Automatic manifolds

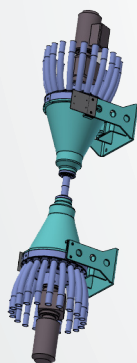
ADDED VALUE:

- **RELIABLE**
The precision of the mechanical components, its PLC control unit and position sensors ensure absolute reliability.
- **NO NEED OF FLOOR SPACE AND EXPANDABLE**
Its special design, modularity and the possibility of expanding its functions at a later time makes this product an innovative solution in the plastic industry.
- **SAFETY**
No risks for the operator. Moving parts are inside the machine.

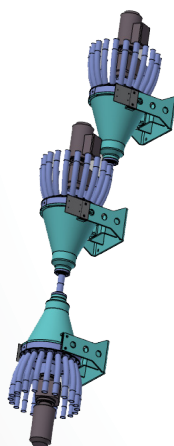
Automatic manifolds



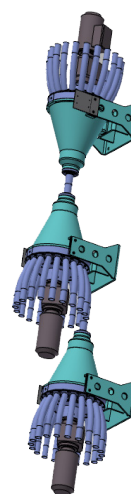
Possible configurations



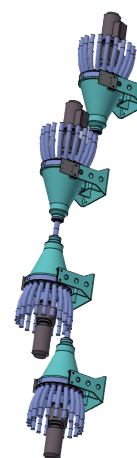
2 modules



3 modules



3 modules



4 modules

TECHNICAL DATA		D. 40	D. 50	D. 60	D. 70
Connections	No.	20	16	12	12
Voltage/Frequency	V/Hz	400/50-60	400/50-60	400/50-60	400/50-60
Total power	kW	0.15	0.15	0.15	0.15
Dimensions WxDxH	mm	544x459x1016	548x466x1016	550x469x1016	555x480x1016
Weight	kg	160	160	160	160